



MFSC 1000X-1500X

使用手册

版权说明

“ ”

引 语

MFSC

MFSC

公司简介

2004

<http://www.maxphotonics.com>



:
: <http://www.maxphotonics.com>
: 400-900-9588
: +86-755-36869377
: info@maxphotonics.com

V1.0

	1
	4
	5
1-	5
2-	6
3-	6
4-	7
5-	11
	12
1-	12
2-	12
3-	12
4-	13
5-	13
6-	13
7-	14
	15
1-	15
2-	16
3-	16
4-QBH	17






5-	18
6-	19
	20
1-	20
2-	21
	22
1-	22
2-	22
3-	23
4-	24
5-	26
6-	27
7-	27
8-	31
	32
1-	32
2-	32
	33
1-	33
2-	33

第一章 特性说明

MFSC 1000X-1500X
1060nm~1100 nm
>30%
MFSC Class 4

第二章 安全信息

1 -

MFSC

1060nm~1100 nm

2-

1.

2.

LaserVision USA Kentek Corporation Rochwell Laser Industries

3-

EN 55011:2010

EN 55024:2010+A1:2015

EN 55032:2015

CISPR 11

FCC PART 15 Class A

ICES-003 issue 6, Class A

EN 61000-3-3:2013

EN 61000-3-2:2014
 EN 61000-4-2:2009
 EN 61000-4-3:2006+A2:2010
 EN 61000-4-4:2012
 EN 61000-4-5:2014+A1:2017
 EN 61000-4-6:2014
 EN 61000-4-8:2010
 EN 61000-4-11:2004+A1:2017

EN 61010-1:2010

EN 60825-1:2014
 CDRH 21 CFR 1040.10

EN 60950-1:2006+A11:2009+A1:2010+A12:2011+A2:2013

	MFSC		CE EMC	
" EMC Directive"		EMC		
		MFSC	Class 4	
1	8		Class 4	EN 60825-

4 -

1.

2.

MFSC

3.

1

2

3

4

5

6

7

8

9

10

11

4.

1

2

3

4

200-

5

6

7

200-240VAC

5.

1

2

0

5-

Laser Institute of America(LIA)

13501 Ingenuity Drive, Suite 128

Orlando,Florida 32826

Phone:407 380 1553,Fax: 407 380 5588

Toll Free:1 800 34 LASER

American National Standards Institute

ANSI Z136.1, American National Standard for the Safe Use of Lasers

(Available through LIA)

International Electro-technical Commission

IEC 60825-1, Edition 1.2

Center for Devices and Radiological Health

21 CFR 1040.10 - Performance Standards for Light-Emitting Products

US Department of Labor - OSHA

Publication 8-1.7 - Guidelines for Laser Safety and Hazard Assessment.

Laser Safety Equipment

Laurin Publishing

Laser safety equipment and Buyer's Guides

第三章 产品描述

1-

MFSC 1000X-1500X

1

2

3

4

5

1

2

2-

6

3-

MFSC-1000X	1000X
MFSC-1500X	1500X

4-

5-



(OFF/ON)	
(EMERGENCY STOP)	
START	
ALARM	
ACTIVE	
POWER	

6-



CTRL	
RS232	RS232
AC 220V	200-240VAC
POWER	200-240VAC
WATER OUT	
WATER IN	
OPTICAL OUTPUT	
ETHERNET	

7-

1.

6.4

QBH

G4.1 QBH



G4 QBH



第四章 详细规格

1-

1							
2							
3	MFSC-1000X	100%		1000		W	
	MFSC-1500X	100%		1500			
4			10		100	%	
5		100%	1070	1080	1090	nm	
6	3dB	100%		3	5	nm	
7		100%	>1h		± 1	± 1.5	%
8		100%	>24h		± 2	± 3	%
9	BPP	50um-QBH				1.5	mm x mrad
	M ²	25um-QBH				1.5	
		35um-QBH				2	
10		10% 90%		50	100	μs	
11		90% 10%		50	100	μs	
12		100%			20	KHz	
13		100%	150				μW
14	MFSC-1000X			10 (5 15)			m
	MFSC-1500X			15 (5 10)			
15	MFSC-1000X			50 25			μm
	MFSC-1500X			50 35			
16			200				mm
17			QBH LOC				

2-

1			200	220	240	VAC
2	MFSC-1000X	100%			3.5	KW
	MFSC-1500X	100%			5.3	
3			10		40	
4			10		85	%
5						
6			-10		60	
7	482.6*700*172 W*D*H					mm
8	MFSC-1000X	53± 2				kg
	MFSC-1500X	57± 2				

3-

1				
2			30	30
			26	22
3			3	
4	MFSC-1000X	10		L/min
	MFSC-1500X	15		
5	MFSC-1000X	2.5		kw
	MFSC-1500X	3.5		

40

26

;

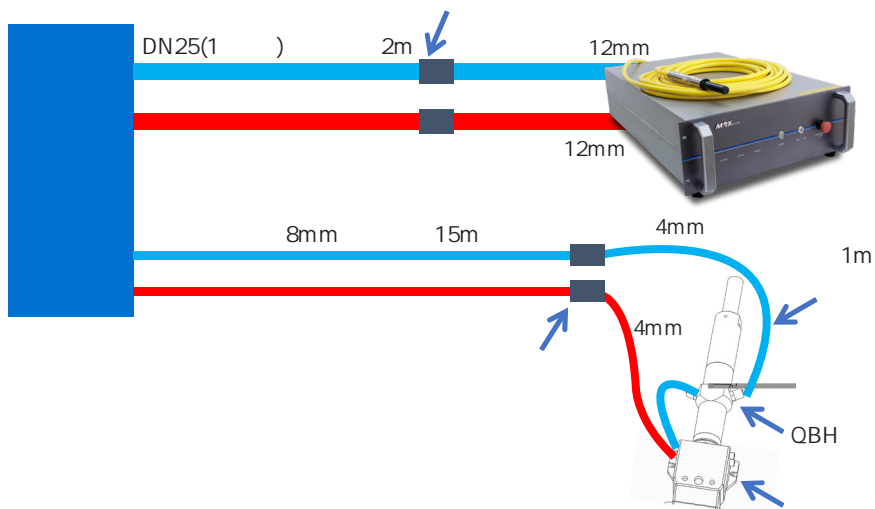
p 0.5bar

0

4-QBH

		L/min	bar	
	* = 6* 4	2	3	28-30

8mm 15m ;
 QBH 6 1m ;
 QBH ;
 p 1.5bar



5-

1

1000

2

10 - 40

3

10% - 85%

4

环境温度、相对湿度、露点对照表														
相对湿度%	30	35	40	45	50	55	60	65	70	75	80	85	90	95
环境温度(°C)	露点 Td (°C)													
10	-7.0	-5.0	-3.0	-1.3	0.0	1.5	2.5	3.6	4.8	5.8	6.7	7.6	8.4	9.2
11	-6.5	-4.0	-2.0	-0.5	1.0	2.5	3.5	4.8	5.8	6.7	7.7	8.6	9.4	10.2
12	-6.0	-3.0	-1.0	0.5	2.0	3.0	4.4	5.5	6.7	7.7	8.6	9.5	10.3	11.1
13	-4.5	-2.0	-0.2	1.4	2.8	4.1	5.3	6.6	7.7	8.7	9.6	10.5	11.4	12.2
14	-3.2	-1.0	0.7	2.2	3.5	5.1	6.4	7.5	8.6	9.6	10.6	11.5	12.4	13.2
15	-2.3	-0.3	1.5	3.1	4.6	6.0	7.3	8.4	9.6	10.6	11.6	12.5	13.4	14.2
16	-1.3	0.5	2.4	4.0	5.6	7.0	8.3	9.5	10.6	11.6	12.6	13.4	14.3	15.2
17	-0.5	1.5	3.2	5.0	6.5	8.0	9.2	10.2	11.5	12.5	13.5	14.5	15.3	16.2
18	0.2	2.3	4.0	5.8	7.4	9.0	10.2	11.3	12.5	13.5	14.5	15.4	16.4	17.2
19	1.0	3.2	5.0	7.2	8.4	9.8	11.0	12.2	13.4	14.5	15.4	16.5	17.3	18.2
20	2.0	4.0	6.0	7.8	9.4	10.7	12.0	13.2	14.4	15.4	16.5	17.4	18.2	19.2

30

70%

6-

mm



第五章 拆装指南

1-

1

2

3

>200mm

4

5

6

2-

1		MFSC XXXX X		1
2		3		1
3				2
4				4
5	QBH	6x4mm		1
6		12x8mm		1
7		10m		1

第六章 使用指南

1-

4
2

2-

32A

4



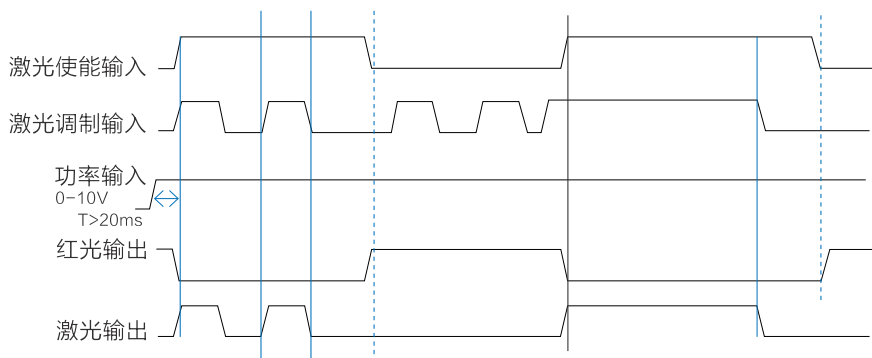
3-

CTRL

DB25

CTRL

CTRL			
18		+	HIGH:20VDC V 24VDC LOW:0VDC V 5VDC 5mA I 15mA
5		-	
17		+	HIGH:20VDC V 24VDC LOW:0VDC V 5VDC 5mA I 15mA
4		-	
16		+	HIGH:20VDC V 24VDC LOW:0VDC V 5VDC 5mA I 15mA
3		-	
15	DA 0-10V	+	1V-10% 10V-100%
2	DA 0-10V	-	
14		1	ON- OFF- V 30VDC, I 100mA
1		2	
19		+	±
6		-	±



4-

1.

1

2

3

>99.5%

4

5

6

99.5%

2.

1

" OFF "

2

3

20

4

5

6

7



5-

- 1
- 2
- 3
- 4
- 5
- 6
- 7

" ON"

START

3

" G3-Series"



4

RS232

EtherNet

5

" G3-Series"



6

RS232

COM

COM

COM

" "

7

EtherNet

IP2

IP

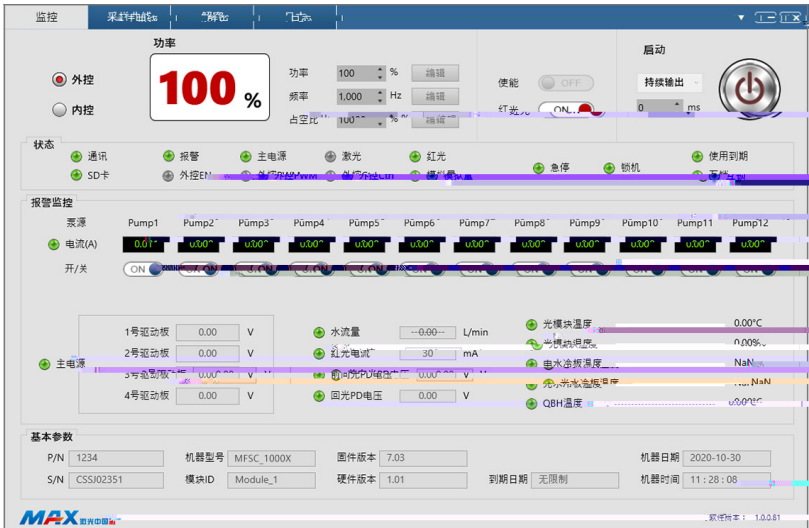
192.168.0.178

" "

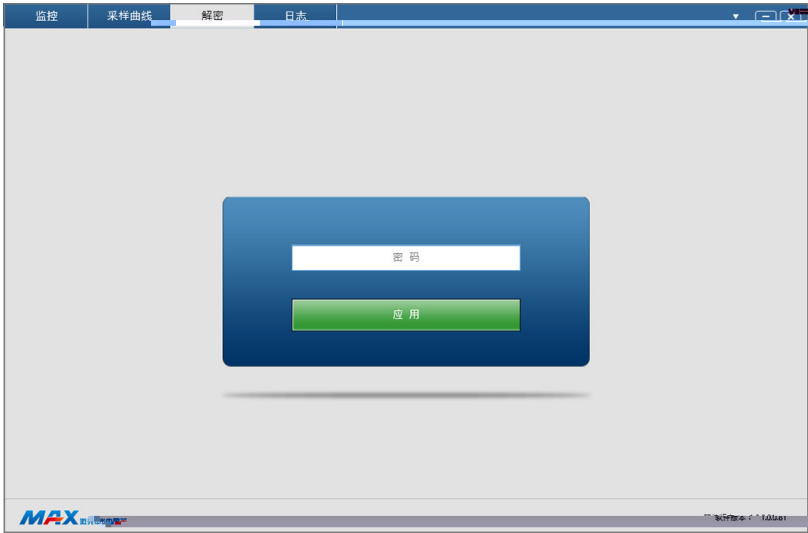


8

PC



9



8-

1			
2			
3			
4			
5			
6			
7			200-240VAC
8		QBH	QBH QBH QBH
9			ALARM ACTIVE

第七章 服务与维修

1-

2-

400-900-9588

第八章 保修声明

1-

2-

1
2
3
4
5
6