

**MAX** 创鑫激光



MFSC 3000C(G6.1)

# 使用手册

" "



MFSC

MFSC 3000C(G6.1)

2004

<http://www.maxphotonics.com>



深圳市创鑫激光股份有限公司

:  
: <http://www.maxphotonics.com>  
: 400-900-9588  
: +86-755-36869371  
: [info@maxphotonics.com](mailto:info@maxphotonics.com)

.....	1
.....	4
.....	5
1- .....	5
2- .....	6
3- .....	6
4- .....	7
5- .....	11
.....	12
1- .....	12
2- .....	12
3- .....	12
4- .....	13
5- .....	13
6- .....	13
7- .....	14
.....	15
1- .....	15
2- .....	16
3- .....	17
4-QBH .....	18
5- .....	19




6-	.....	20
	.....	22
1-	.....	22
2-	.....	23
	.....	24
1-	.....	24
2-	.....	24
3-	.....	24
4-	.....	28
5-	.....	28
6-	.....	29
7-	.....	33
	.....	34
1-	.....	34
2-	.....	35
	.....	38
1-	.....	38
2-	.....	38
	.....	39
1-	.....	39
2-	.....	39

MFSC  
MFSC  
>30%  
MFSC

1060nm 1100 nm

Class 4

1 -

安全标识	描述
	
	
	

MFSC

1060nm~1100 nm

## 2-

### 1. 激光防护要求

### 2. 激光防护设备商

LaserVision USA   Kentek Corporation   Rochwell Laser Industries

## 3-

电磁兼容与抗干扰性：

EN IEC 61000-6-4:2019

CISPR 16-2-1

CISPR 16-2-3

EN IEC 61000-6-2:2019

EN 61000-4-2:2009

EN 61000-4-3:2020

EN 61000-4-4:2012

EN 61000-4-5:2014+A1:2017

EN 61000-4-6:2014

EN 61000-4-11:2020

## 4 -

### 1. 镜面反射

### 2. 配件安全须知

## MFSC

## 3、光学操作须知

1

2

3

4

5

6

7

8

9

10

11

12

“ ”

#### 4、电气操作须知

创鑫强烈建议您阅读下述操作要点后再行操作激光器：

1

2

3

4

20A

5

360-

440VAC

6

7

360-440VAC

## 5、激光器操作环境要求

创鑫推荐您按照如下的措施操作，以期延长激光器的使用寿命：

1

2

3

0

## 5-

如果您需要获取更多的激光器安全方面的信息，请参考：

Laser Institute of America(LIA)

13501 Ingenuity Drive, Suite 128

Orlando,Florida 32826

Phone:407 380 1553,Fax: 407 380 5588

Toll Free:1 800 34 LASER

American National Standards Institute

ANSI Z136.1, American National Standard for the Safe Use of Lasers

(Available through LIA)

International Electro-technical Commission

IEC 60825-1, Edition 1.2

Center for Devices and Radiological Health

21 CFR 1040.10 - Performance Standards for Light-Emitting Products

US Department of Labor - OSHA

Publication 8-1.7 - Guidelines for Laser Safety and Hazard Assessment.

Laser Safety Equipment

Laurin Publishing

Laser safety equipment and Buyer's Guides

**1-**

MFSC

**主要特性:**

- 1
- 2
- 3
- 4
- 5

**应用领域:**

- 1
- 2

**2-**

6

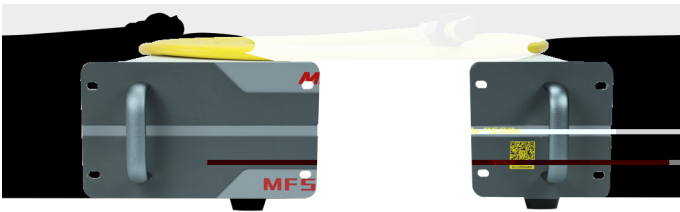
6.3-6.6

**3-**

M- F- S- C- XXX- XX	
1- 2- 3- 4- 5- 6	
1	M Maxphotronics
2	F Fiber Laser
3	S Single Mode /
4	C ContinueWave
5	XXXX XXXX W
6	


4-

5-



6-



名称	功能说明
RS232	RS232
CTRL	
ACTIVE/ALARM	
BLUETOOTH	
AC380V	360-440VAC
POWER	360-440VAC
WATER OUT	3/4
WATER IN	3/4
OPTICAL OUTPUT	
	

7-

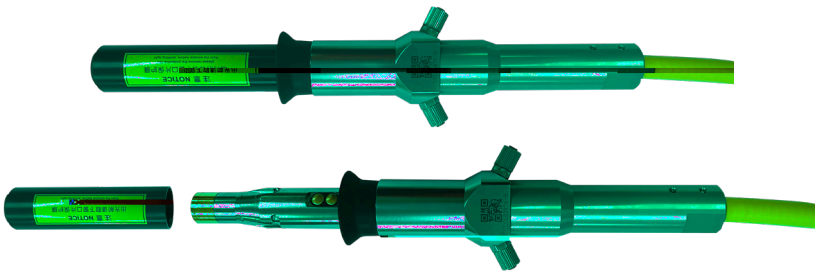
1. 光纤输出头

QBH

"

"

G4.3 QBH



## 1-

序号	特性参数	测试条件	最小值	典型值	最大值	单位
1		/				
2						
3		100%		3000		W
4			10		100	%
5		100%	1070	1080	1090	nm
6	3dB	100%		4	6	nm
7		100% >1h		± 1	± 2	%
8		100% >24h		± 3	± 5	%
9	BPP	50um-QBH			1.8	mm x mrad
		100um-QBH			3.6	mm x mrad
10		10% 90%		50	100	μs
11		90% 10%		50	100	μs
12		100%			20	KHz
13		100%	200			μW
14		50um-QBH		20		m
15			50	100/200		μm
16			200			mm
17		QBH LOC				

## 2-

序号	特性参数	测试条件	最小值	典型值	最大值	单位
1			360	400	400	VAC
2		100%			10	KW
3			10		40	
4			10		85	%
5						
6			-10		60	
7			482.6*578*122.8 W*D*H			mm
8			35.5			kg

## 3-

序号	特性	参数		单位
1				
2		24	20	
		20		
3		3		bar
4		25		L/ min
5		7.5		kw

40

22± 2 ( 20 )

;

p 0.5bar

;

0

20%

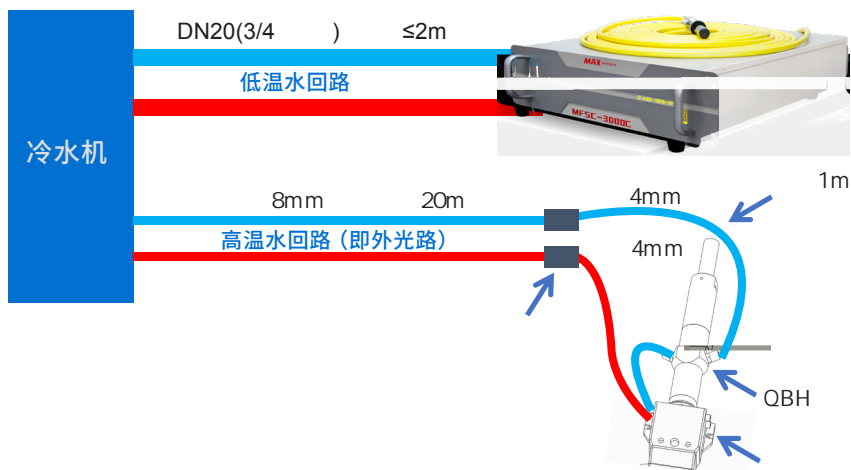
( )

0

## 4-QBH 水冷条件

冷却方式	水管尺寸要求	水流量 (L/min)	水压 (bar)	冷却水温 (°C)
	* = 6* 4	2	3	28-30

QBH 8mm 20m ;  
QBH 6 1m ;  
QBH ;  
p 1.5bar



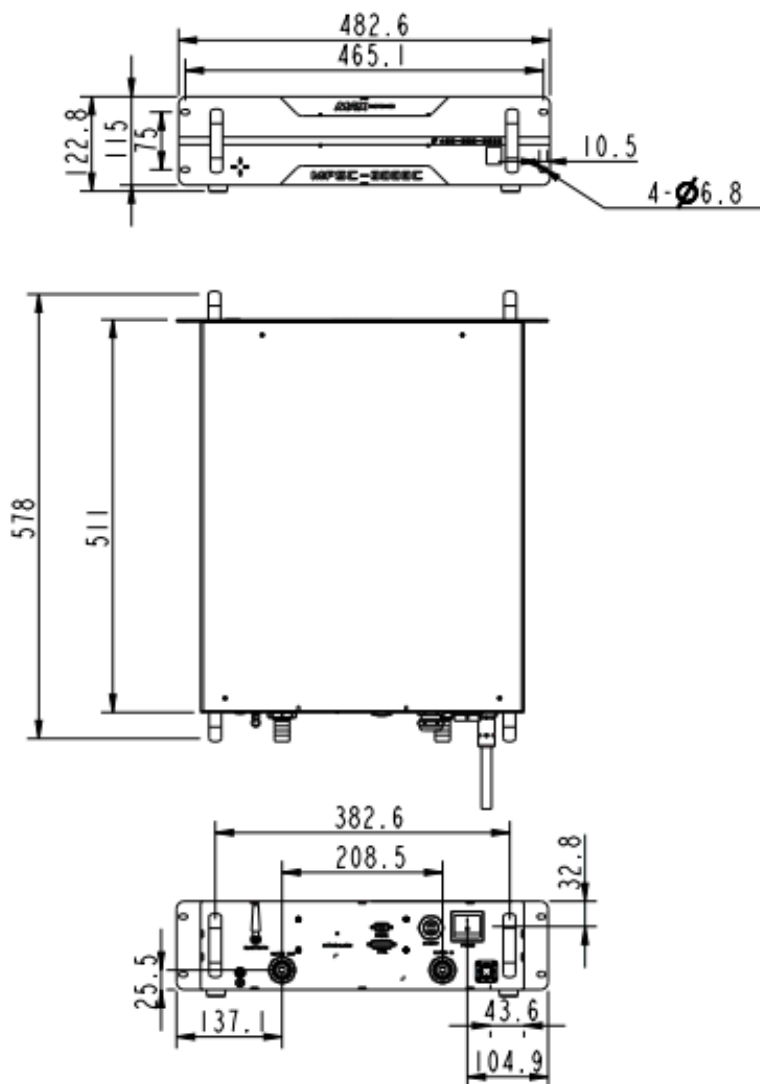
### 5- 安装环境需求

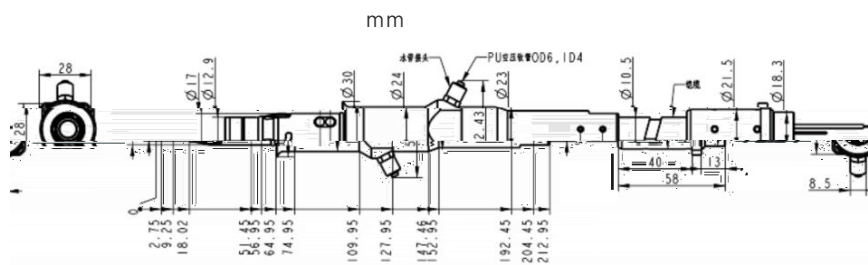
- 1 1000
- 2 10 - 40
- 3 10% - 85%
- 4 :

%	Td ( )													
	30	35	40	45	50	55	60	65	70	75	80	85	90	95
10	-7.0	-5.0	-3.0	-1.3	0.0	1.5	2.5	3.6	4.8	5.8	6.7	7.6	8.4	9.2
11	-6.5	-4.0	-2.0	-0.5	1.0	2.5	3.5	4.8	5.8	6.7	7.7	8.6	9.4	10.2
12	-5.0	-3.0	-1.0	0.5	2.0	3.3	4.4	5.5	6.7	7.7	8.7	9.5	10.9	11.2
13	-4.5	-2.0	-0.2	1.4	2.8	4.1	5.3	6.6	7.7	8.7	9.6	10.5	11.4	12.2
14	-3.2	-1.0	0.7	2.2	3.5	5.1	6.4	7.5	8.6	9.6	10.6	11.5	12.4	13.2
15	-2.3	-0.3	1.5	3.1	4.6	6.0	7.3	8.4	9.6	10.6	11.6	12.5	13.4	14.2
16	-1.3	0.5	2.4	4.0	5.6	7.0	8.3	9.5	10.6	11.6	12.6	13.4	14.3	15.2
17	-0.5	1.5	3.2	5.0	6.5	8.0	9.2	10.2	11.5	12.5	13.5	14.5	15.3	16.2
18	0.2	2.3	4.0	5.8	7.4	9.0	10.2	11.3	12.5	13.5	14.5	15.4	16.4	17.2
19	1.0	3.2	5.0	7.2	8.4	9.8	11.0	12.2	13.4	14.5	15.4	16.5	17.3	18.2
20	2.0	4.0	6.0	7.8	9.4	10.7	12.0	13.2	14.4	15.4	16.5	17.4	18.3	19.2
21	2.8	5.0	7.0	8.6	10.2	11.0	12.9	14.2	15.3	16.4	17.4	18.4	19.3	20.2
22	3.5	5.8	7.8	9.5	11.0	12.5	13.8	15.2	16.3	17.3	18.4	19.4	20.3	21.2
23	4.4	6.8	8.7	10.4	12.0	13.5	14.8	16.2	17.3	18.4	19.4	20.4	21.3	22.2
24	5.3	7.7	9.7	11.4	13.0	14.5	15.8	17.0	18.2	19.3	20.4	21.4	22.3	23.1
25	6.2	8.6	10.5	12.3	14.0	15.4	16.8	18.0	19.1	20.3	21.3	22.3	23.2	23.9
26	7.0	9.4	11.4	13.2	14.8	16.3	17.7	19.0	20.1	21.2	22.3	23.3	24.2	25.1
27	8.0	10.3	12.2	14.0	15.8	17.3	18.7	19.9	21.1	22.2	23.2	24.3	25.2	26.1
28	8.8	11.2	13.2	15.0	16.7	18.0	19.6	20.9	22.0	23.0	24.2	25.2	26.2	27.1
29	9.7	12.0	14.0	15.9	17.6	19.2	20.5	21.3	23.0	24.1	25.2	26.2	27.2	28.1
30	10.5	12.9	14.9	16.8	18.5	20.0	21.4	22.8	23.9	25.1	26.2	27.2	28.2	29.1
31	11.4	13.8	15.9	17.8	19.4	20.9	22.4	23.0	24.8	26.0	26.9	28.2	29.2	30.1
32	12.2	14.7	16.8	18.6	20.3	21.9	23.3	24.6	25.8	27.0	28.1	29.2	30.1	31.1
33	13.0	15.6	17.6	19.6	21.3	22.9	24.2	25.6	26.8	28.0	29.0	30.1	32.1	32.1
34	13.9	16.5	18.6	20.5	22.2	23.8	25.2	26.5	27.7	29.0	29.5	31.1	32.1	33.1
35	14.9	17.4	19.5	21.4	23.0	24.6	26.2	27.5	28.7	29.9	31.0	32.1	33.1	34.1
36	15.7	18.1	20.3	22.2	24.0	25.0	27.0	28.4	29.0	30.9	32.0	33.1	34.1	35.2
37	16.6	19.2	21.2	23.2	24.9	26.5	27.9	29.5	30.7	31.8	33.0	34.1	35.2	36.2
38	17.5	19.9	22.0	23.9	25.8	27.4	28.9	30.3	31.5	32.0	33.9	35.1	36.0	37.0
39	18.1	20.8	23.0	24.9	26.6	28.3	29.8	31.2	32.5	33.8	34.9	36.2	36.8	38.1
40	19.2	21.6	23.9	25.9	27.6	29.2	30.7	32.1	33.5	34.7	35.9	36.9	38.1	39.1

6-

mm





### 1-

激光器属于精密贵重物品，创鑫推荐您按如下步骤拆装包装箱。

请依据以下步骤进行：

1

2

3

“ ”

4

QBH

>200mm

5

1

6

2-

序号	名称	规格型号	单位	数量
1		MFSC-3000C-BKW6.1		1
2		/		1
3		/		1
4	QBH	6x4mm		1
5		19.1* 29mm		1
6		26-38mm		2
7		/		1
8		/		1
9	2*2	/		6
10		/		1
11		12*28.5mm		6

1-

" "

2-

20A

" "

3-

CTRL

DB15

## 3000C(G6.1) DB15

CTRL 接口 插孔序号	接线 颜色	功能	说明
1		EX_LOCK+/ +	± ) (
2		EX_LOCK-/ -	
3		EX_EMERGENCY1_ INPUT+/ 1+	±
4		EX_EMERGENCY1_ INPUT-/ 1-	
5		EX_EN+/ +	I 20VDC V 30VDC 5mA 0VDC V 5VDC
6		EX_EN-/ -	
7		EX_M+/ +	I 20VDC V 30VDC 5mA 0VDC V 5VDC
8		EX_M-/ -	
9		EX_DA+/-0-10V +	1V-10% 10V-100% I 1mA
10		EX_DA-/-0-10V -	
11		ERROR_A/ _A	I - V 30VDC, 100mA -
12		ERROR_B/ _B	
13	NC		
14		EX_CONTROL-/ -	± ( )
15		EX_CONTROL+/ +	±

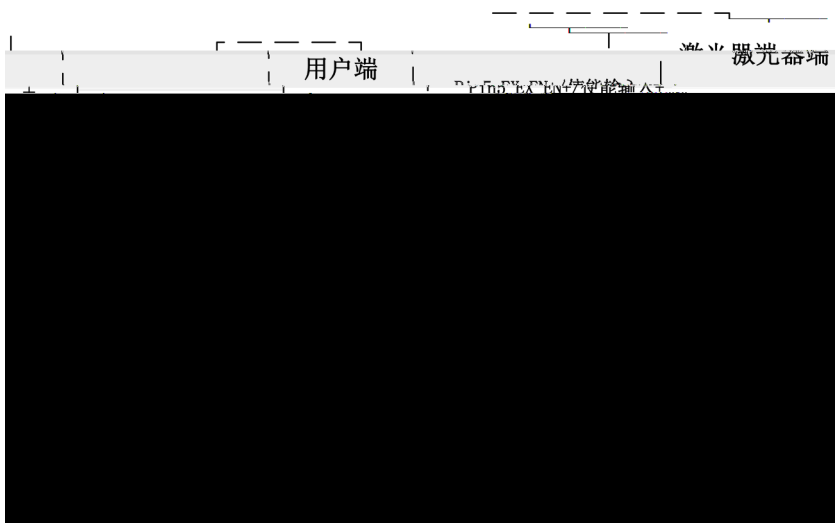
注意：

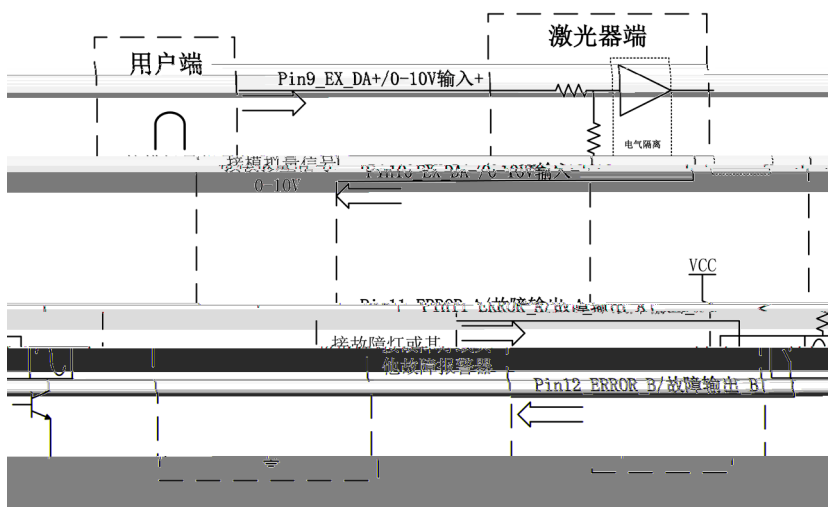
◎ 为了您的安全及设备的可靠运行，请严格按照产品说明书安装连接产品外控线、电源线及安全保护地线。



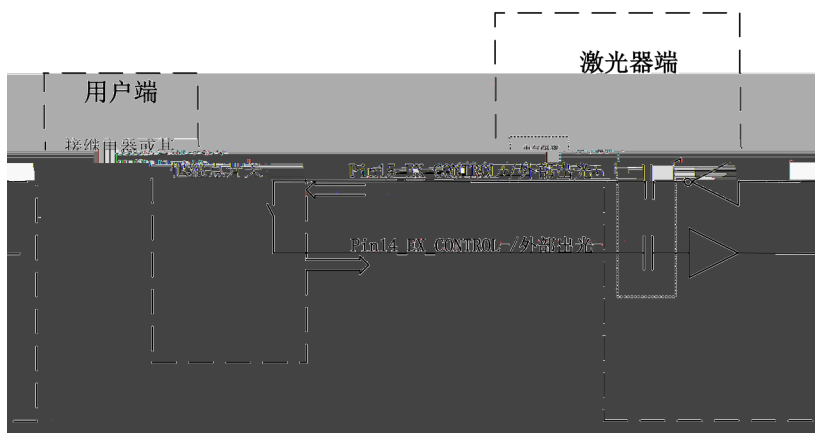
注意：

◎ 互锁 / 急停输入属于开关型（干节点）信号禁止接入电压 / 电流信号。





故障输出触点电压  $V \leq 30V$ , 电流  $I \leq 100mA$ 。



注意：

- ◎外部出光信号属于开关型（干节点）信号禁止接入电压 / 电流信号；
- ◎基于安全考虑，激光器每次启动初始化完成后外部出光信号都需要重新短接一次才会生效允许出光。

### 4-

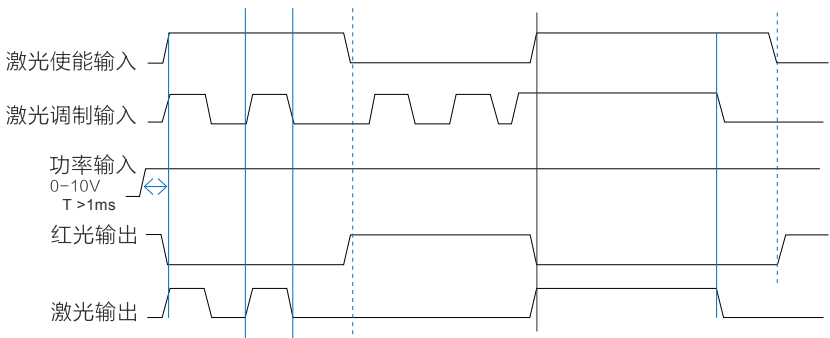
启动流程如下所示：

- 1
- 2
- 3
- 4
- 5

### 5-

激光器工作模式如下：

- 1
- 2
- 3



4

1HZ

6-

1 " " " " " " " " G3 -

" " NET4.6" " G3-Series-n.n.n.n"

<http://www.maxphotonics.com/Cn/Software.html>



2

G3 -

NET4.6

G3-Series-n.n.n.n

Win10

.NET 4.6

NET4.6

3

" G3-Series"



4

RS232

EtherNet

PC

5

" G3-Series"



6

RS232

COM

COM

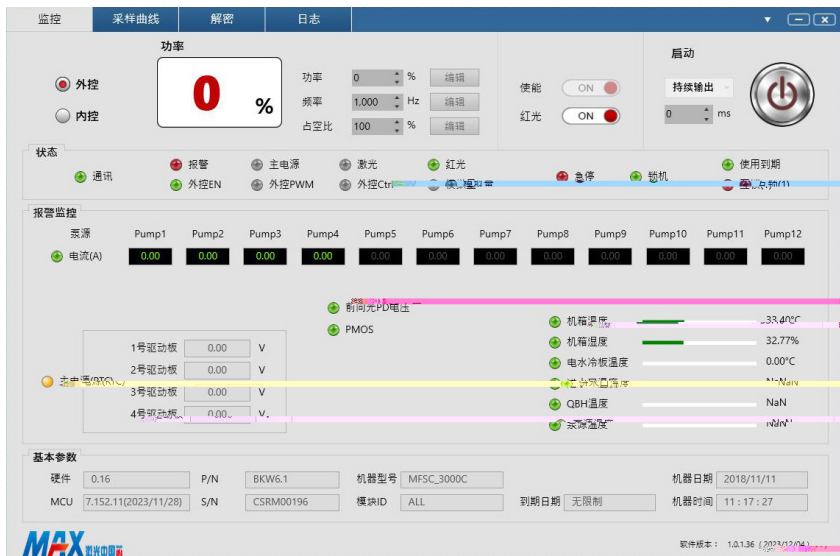
COM

" "



	7	EtherNet	IP2
IP1	NP2	IP	192.168.0.178
"	"		





8



## 7-

序号	故障名称	故障原因	备注
1			
2			
3			;
4			
5			
6	QBH	QBH	QBH QBH QBH
7			

**1-**

清洁光纤连接器，您需要如下器材：

1

2

3

4

5

6

7

2-

1

2

3

7-1

4

7-2

5

6

QBH

7

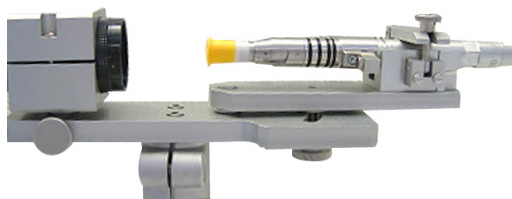
7-3

14

8



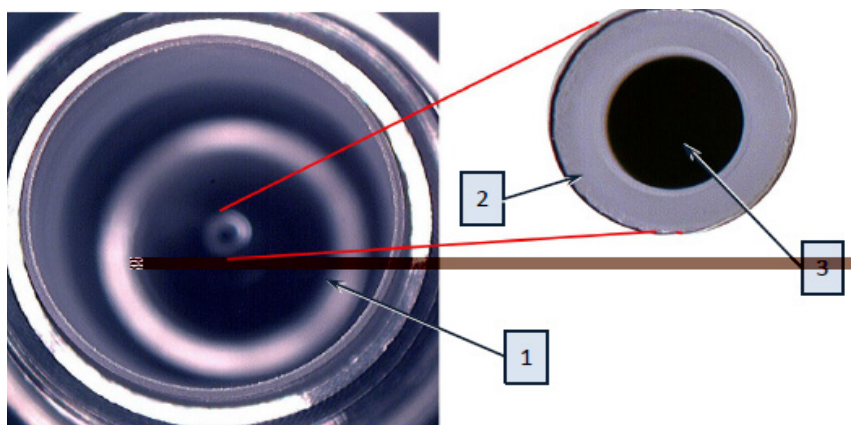
7-1



7-2



7-3

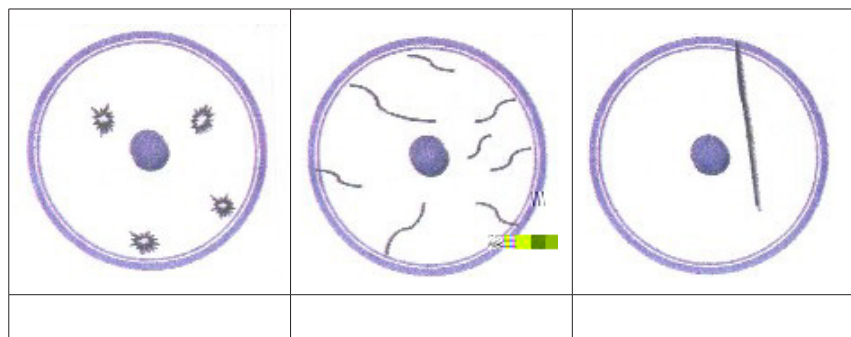


1

2

3

7-4



7-5

1-

2-

400-900-9588

1-

2-

- 1
- 2
- 3
- 4
- 5
- 6