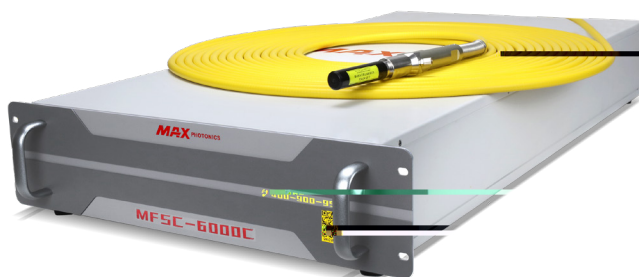


MAX 创鑫激光



MFSC 6000C(G6.1)

使用手册

版权说明

“ ”

引 语

MFSC

MFSC 6000C(G6.1)

公司简介

2004

<http://www.maxphotonics.com>



:
: <http://www.maxphotonics.com>
: 400-900-9588
: +86-755-36869371
: info@maxphotonics.com

.....	1
MFSC-	4
	5
1-	5
2-	6
3-	6
4-	7
5-	11
	12
1-	12
2-	12
3-	13
4-	13
5-	13
6-	13
7-	14
	16
1-	16
2-	17
3-	17
4-QBH	18
5-	19

6-	20
		22
1-	22
2-	23
		24
1-	24
2-	24
3-	24
4-	28
5-	28
6-	29
7-	33
		34
1-	34
2-	35
		38
1-	38
2-	38
		39
1-	39
2-	39

MFSC-






MFSC
>30%
MFSC

1060nm 1100 nm

Class 4

第二章 安全信息

1 -

MFSC

1060nm 1100 nm

6KW

1

2-

2

LaserVision USA Kentek Corporation Rochwell Laser Industries

3-

EN IEC 61000-6-4:2019

CISPR 16-2-1

CISPR 16-2-3

EN IEC 61000-6-2:2019

EN 61000-4-2:2009

EN 61000-4-3:2020

EN 61000-4-4:2012

EN 61000-4-5:2014+A1:2017

EN 61000-4-6:2014

EN 61000-4-11:2020

4-

1

2

MFSC

3

1

2

3

4

5

6

7

8

9

10

11

12

“

”

4

1

2

3

4

63A

5

360-

440VAC

6

7

360-440VAC

5

1

2

3

4

0

5-

Laser Institute of America(LIA)

13501 Ingenuity Drive, Suite 128

Orlando,Florida 32826

Phone:407 380 1553,Fax: 407 380 5588

Toll Free:1 800 34 LASER

American National Standards Institute

ANSI Z136.1, American National Standard for the Safe Use of Lasers

(Available through LIA)

International Electro-technical Commission

IEC 60825-1, Edition 1.2

Center for Devices and Radiological Health

21 CFR 1040.10 - Performance Standards for Light-Emitting Products

US Department of Labor - OSHA

Publication 8-1.7 - Guidelines for Laser Safety and Hazard Assessment.

Laser Safety Equipment

Laurin Publishing

Laser safety equipment and Buyer's Guides

第三章 产品描述

1-

MFSC

1

2

3

4

5

1

2

2-

6.3-6.6

2-

6

6.3-6.6

3-

M - F - S - C - XXX - XX		1 - 2 - 3 - 4 - 5 - 6	
1		M	Maxphotronics
2		F	Fiber Laser
3		S	Single Mode
4		C	ContinueWave
5	XXXX		XXXX W
6			

4-

5-



6-





7-

1

QBH

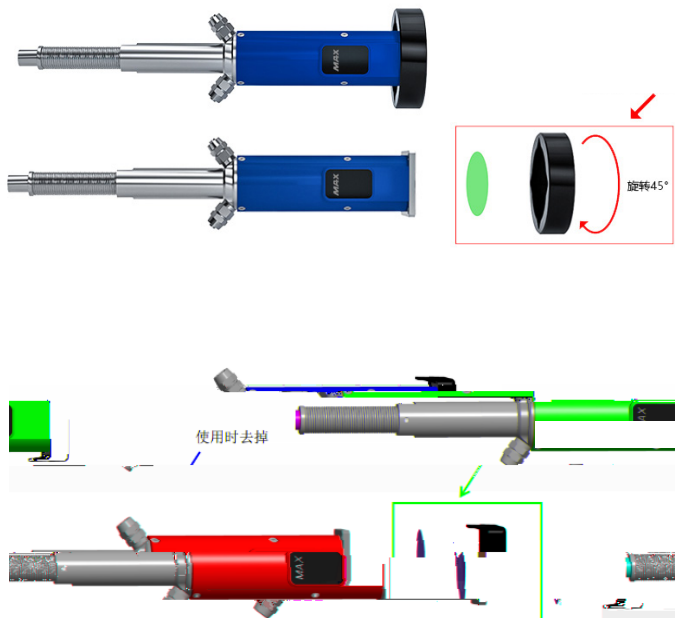
“

”

G4.3 QBH



G5QBH



第四章 详细规格

1-

1		/				
2						
3	MFSC-6000C(G6.1)			6000		W
4			10		100	%
5		100%	1070	1080	1090	nm
6	3dB	100%		4	7	nm
7		100%	>1h	± 1	± 2	%
8		100%	>24h	± 3	± 5	%
9	BPP	100% 100um QBH	3.0		3.8	mm x mrad
10		10% 90%		50	100	μs
11		90% 10%		50	100	μs
12		100%			5	KHz
13		100%	200			μW
14				20		m
15		100 150/200				μm
16			200			mm
17		QBH LOC				

2-

1			360	400	440	VAC
2	MFSC-6000C(G6.1)	100%			20	KW
3			10		40	
4			10		85	%
5						
6			-10		60	
7		420*855.5*115 W*D*H				mm
8			56±5			kg

3-

1			
2		24	20
		18	
3		≥ 5	bar
4	MFSC-6000C(G6.1)	≥50	L/min
5	MFSC-6000C(G6.1)	14	kw

40° C

22+2° C(

18° C)

;

 $\Delta p \leq 0.5 \text{ bar}$

;

0

20% ()

-15C

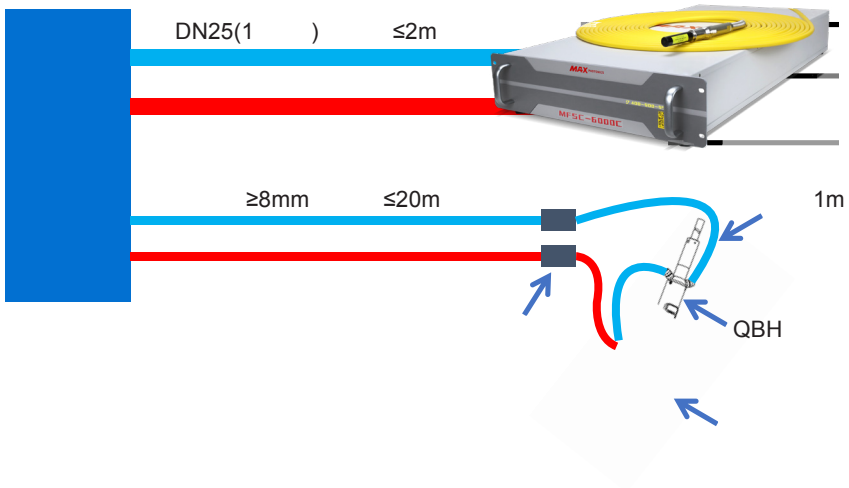
4-QBH

		L/min	bar	
	* = 6* 4	2	3	28-30

≥8mm ≤20m ;
QBH Φ6 ≤1m ;

QBH ;

Δp≤1.5bar



5-

1

1000

2

10 – 40

3

10% - 85%

4

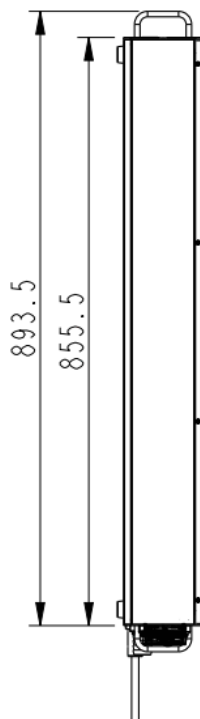
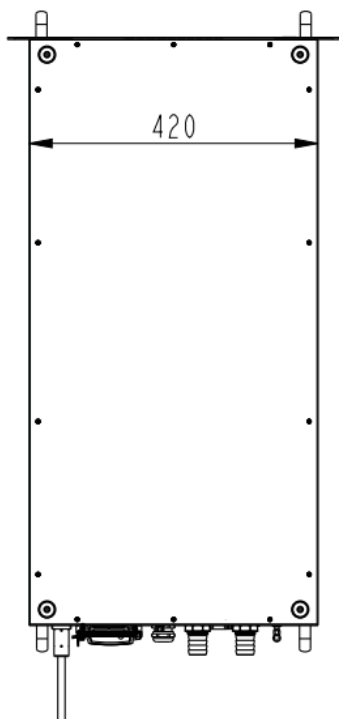
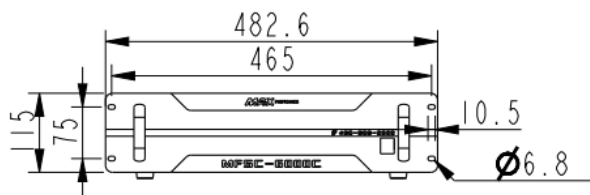
%	-														
	30	35	40	45	50	55	60	65	70	75	80	85	90	95	
)	Td()														
10	-7.0	-5.0	-3.0	-1.3	0.0	1.5	2.5	3.6	4.8	5.8	6.7	7.6	8.4	9.2	
11	-6.5	-4.0	-2.0	-0.5	1.0	2.5	3.5	4.8	5.8	6.7	7.7	8.6	9.4	10.2	
12	-5.0	-3.0	-1.0	0.5	2.0	3.3	4.4	5.5	6.7	7.7	8.7	9.5	10.9	11.2	
13	-4.5	-2.0	-0.2	1.4	2.8	4.1	5.3	6.6	7.7	8.7	9.6	10.5	11.4	12.2	
14	-3.2	-1.0	0.7	2.2	3.5	5.1	6.4	7.5	8.6	9.6	10.6	11.5	12.4	13.2	
15	-2.3	-0.3	1.5	3.1	4.6	6.0	7.3	8.4	9.6	10.6	11.6	12.5	13.4	14.2	
16	-1.3	0.5	2.4	4.0	5.6	7.0	8.3	9.5	10.6	11.6	12.6	13.4	14.3	15.2	
17	-0.5	1.5	3.2	5.0	6.5	8.0	9.2	10.2	11.5	12.5	13.5	14.5	15.3	16.2	
18	0.2	2.3	4.0	5.8	7.4	9.0	10.2	11.3	12.5	13.5	14.5	15.4	16.4	17.2	
19	1.0	3.2	5.0	7.2	8.4	9.8	11.0	12.2	13.4	14.5	15.4	16.5	17.3	18.2	
20	2.0	4.0	6.0	7.8	9.4	10.7	12.0	13.2	14.4	15.4	16.5	17.4	18.3	19.2	
21	2.8	5.0	7.0	8.6	10.2	11.0	12.9	14.2	15.3	16.4	17.4	18.4	19.3	20.2	
22	3.5	5.8	7.8	9.5	11.0	12.5	13.8	15.2	16.3	17.3	18.4	19.4	20.3	21.2	
23	4.4	6.8	8.7	10.4	12.0	13.5	14.8	16.2	17.3	18.4	19.4	20.4	21.3	22.2	
24	5.3	7.7	9.7	11.4	13.0	14.5	15.8	17.0	18.2	19.3	20.4	21.4	22.3	23.1	
25	6.2	8.6	10.5	12.3	14.0	15.4	16.8	18.0	19.1	20.3	21.3	22.3	23.2	23.9	
26	7.0	9.4	11.4	13.2	14.8	16.3	17.7	19.0	20.1	21.2	22.3	23.3	24.2	25.1	
27	8.0	10.3	12.2	14.0	15.8	17.3	18.7	19.9	21.1	22.2	23.2	24.3	25.2	26.1	
28	8.8	11.2	13.2	15.0	16.7	18.0	19.6	20.9	22.0	23.0	24.2	25.2	26.2	27.1	
29	9.7	12.0	14.0	15.9	17.6	19.2	20.5	21.3	23.0	24.1	25.2	26.2	27.2	28.1	
30	10.5	12.9	14.9	16.8	18.5	20.0	21.4	22.8	23.9	25.1	26.2	27.2	28.2	29.1	
31	11.4	13.8	15.9	17.8	19.4	20.9	22.4	23.0	24.8	26.0	26.9	28.2	29.2	30.1	
32	12.2	14.7	16.8	18.6	20.3	21.9	23.3	24.6	25.8	27.0	28.1	29.2	30.1	31.1	
33	13.0	15.6	17.6	19.6	21.3	22.9	24.2	25.6	26.8	28.0	29.0	30.1	32.1	32.1	
34	13.9	16.5	18.6	20.5	22.2	23.8	25.2	26.5	27.7	29.0	29.5	31.1	32.1	33.1	
35	14.9	17.4	19.5	21.4	23.0	24.6	26.2	27.5	28.7	29.9	31.0	32.1	33.1	34.1	
36	15.7	18.1	20.3	22.2	24.0	25.0	27.0	28.4	29.0	30.9	32.0	33.1	34.1	35.2	
37	16.6	19.2	21.2	23.2	24.9	26.5	27.9	29.5	30.7	31.8	33.0	34.1	35.2	36.2	
38	17.5	19.9	22.0	23.9	25.8	27.4	28.9	30.3	31.5	32.0	33.9	35.1	36.0	37.0	
39	18.1	20.8	23.0	24.9	26.6	28.3	29.8	31.2	32.5	33.8	34.9	36.2	36.8	38.1	
40	19.2	21.6	23.8	25.8	27.6	29.2	30.7	32.1	33.5	34.7	35.8	36.8	38.1	39.1	

≤28

≤50%

6-

mm



第五章 拆装指南

1-

1

2

3

"

"

4

QBH

>200mm

5

6

1

7

8

2-

1		MFSC-6000C(G6.1)		1
2		/		1
3		/		1
4		/		4
5		Φ25.4mm		1
6		26-38		2
7	QBH	6x4mm		1

第六章 使用指南

1-

“ ”
“ ”

2-

63A

“ ”

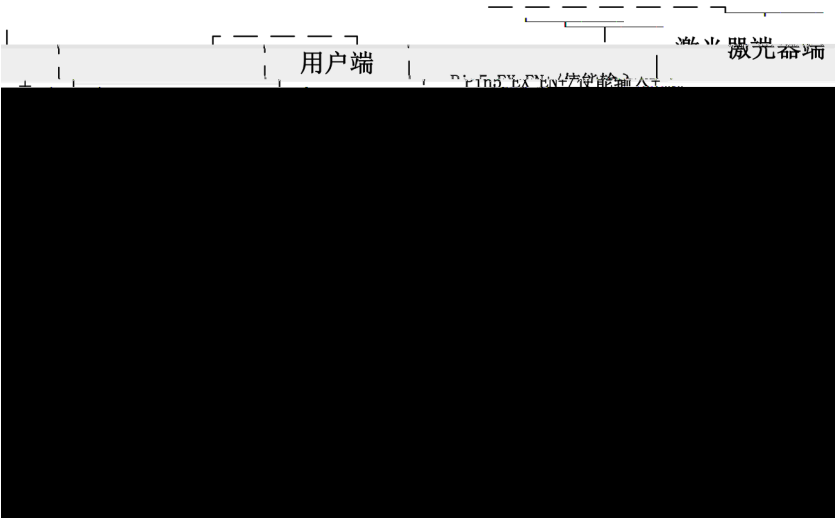
3-

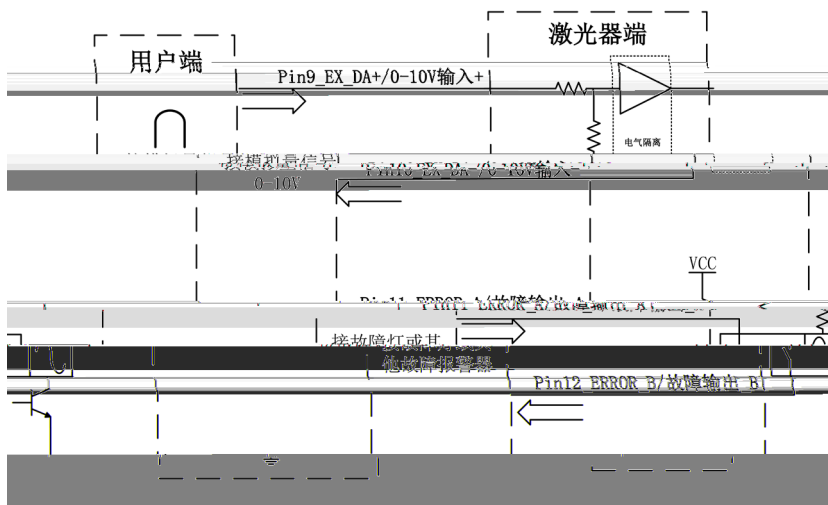
CTRL

DB15

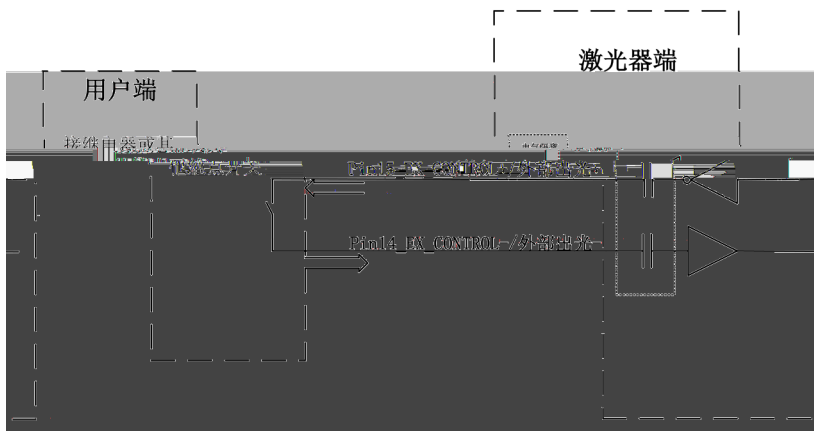
6000C(G6.1) CTRL

CTRL			
1		EX_LOCK+/ +	± ()
2		EX_LOCK-/ -	±
3		EX_EMERGENCY1_ INPUT+/ 1+	±
4		EX_EMERGENCY1_INPUT-/ 1-	±
5		EX_EN+/ +	20VDC V 30VDC OVDC V 5VDC
6		EX_EN-/ -	I 5mA
7		EX_M+/ +	20VDC V 30VDC OVDC V 5VDC
8		EX_M-/ -	I 5mA
9		EX_DA+/-0-10V +	1V-10% 10V-100%
10		EX_DA-/-0-10V -	I 1mA
11		ERROR_A/ _A	- V 30VDC, -
12		ERROR_B/ _B	I 100mA
13	NC		
14		EX_CONTROL-/ -	± ()
15		EX_CONTROL+/ +	±





V 30V, I 100mA



:

()

/ ;

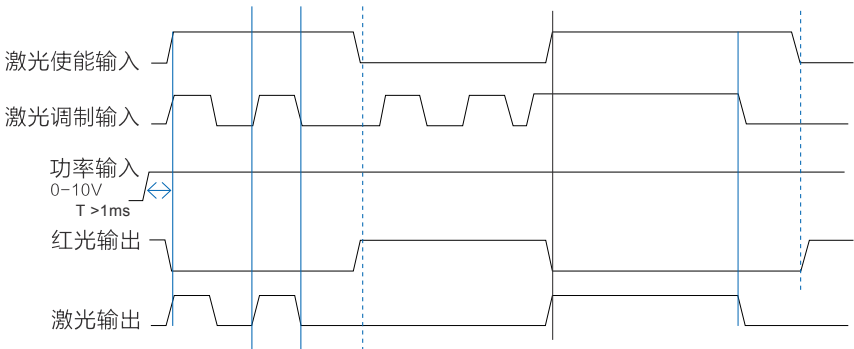
4-

- 1
- 2
- 3
- 4
- 5

5-

- 1
- 2

- 3



4

1HZ

6-

1 " " " " " " " " G3 -
" " NET4.6" " G3-Series-n.n.n.n"

http://www.maxphotonics.com/Cn/Software.html

888 快速链接 创鑫激光 产品 应用 服务 创鑫 联系 CN / EN 400-900-98

下载中心

说明书 安装视频 安装软件 应用资料

	G3系列-软件安装指导书 v1.2 Updated:2020-06-15	G3-Series-zh-1.0.1.16 Updated:2020-07-16
NET4.6 Updated:2020-04-17		NET 4.0 安装包 Updated:2020-04-17

2

G3 -

NET4.6

G3-Series-n.n.n.n

Win10

.NET 4.6

NET4.6

3

" G3-Series"



4

RS232

EtherNet

5

" G3-Series"



6

RS232

COM

COM

COM

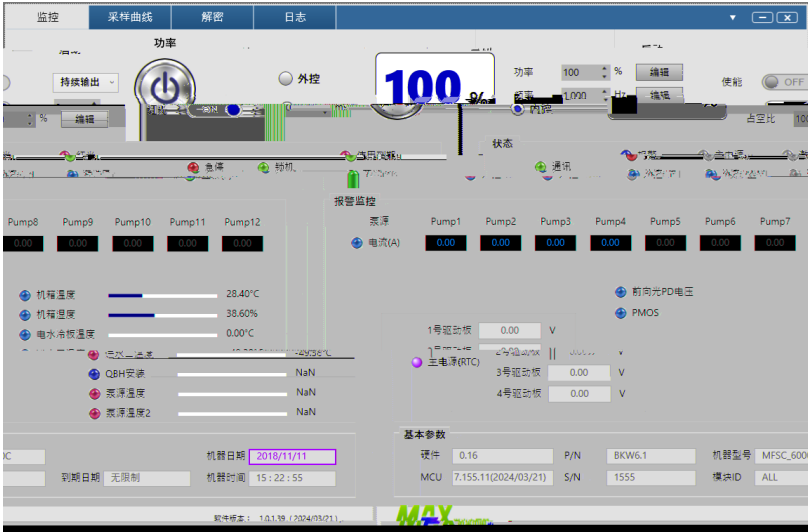
" "



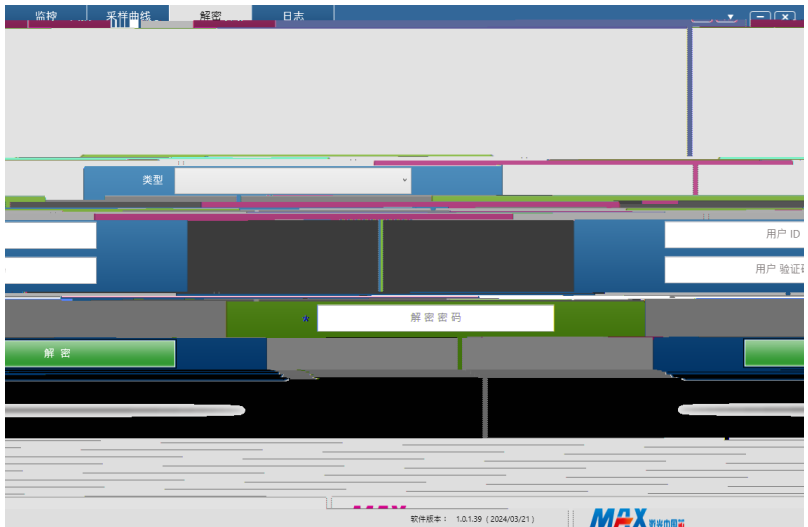
7	EtherNet	IP2
IP	192.168.0.178	" "



8



9



U

7-

1			
2			
3			
4			
5	QBH	QBH	QBH QBH
6			

第七章 光纤连接器检查和清洁指南

1-

1
2
3
4
5
6
7

2-

1

2

3

7-1

4

7-2

5

6

QBH

7

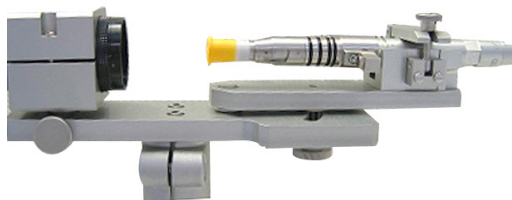
7-3

14

8



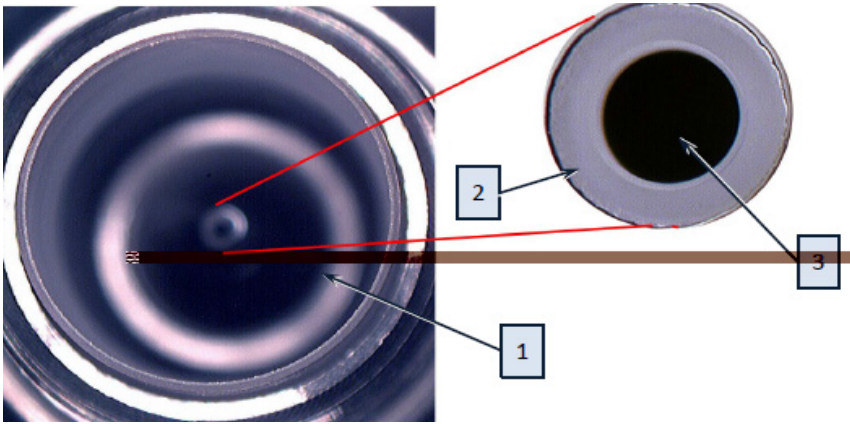
7-1



7-2



7-3

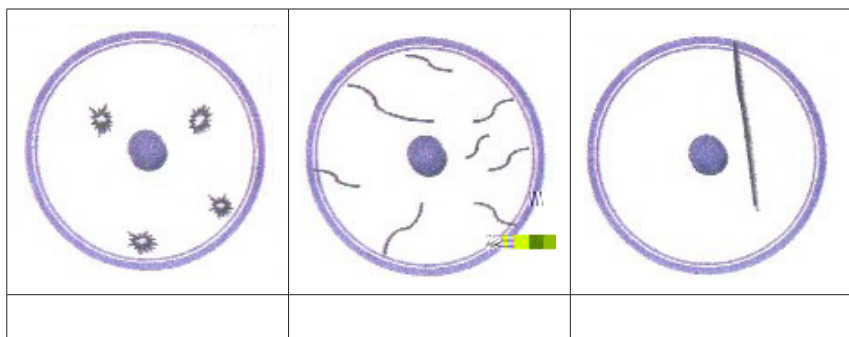


1

2

3

7-4



7-5

第八章 服务与维修

1-

2-

400-900-9588

第九章 保修声明

1-

2-

1
2
3
4
5
6